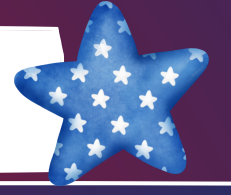


# JULY



## Summer Menu

Aquatic Center-Fairsite- Community-Mokelumne Manor

Community Meal Program

6/10-7/26

MONDAY

TUESDAY

WEDNESDAY

THURSDAY

FRIDAY

Meals meet USDA Regulations and all items are whole grain-rich.

OFFERED DAILY

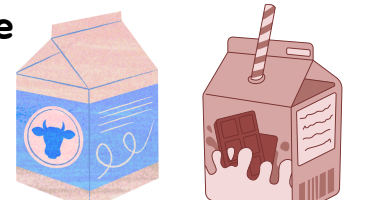
FRUITS



VEGGIES



Milk Choices:  
Nonfat Chocolate Milk or  
1% White Milk or Fat Free  
White



Galt Joint Union Elementary School District

1 Choco Chip Muffin  
w/ Cheese Stick  
\*\*\*\*  
Lunchable

2 Concha w/  
Cheese Stick  
\*\*\*\*  
Yogurt Bento

3 Cereal w/ Cheese Stick  
\*\*\*\*  
Deli Sandwich w/ Chips

4 **Happy Independence Day!**  
**No School**

5 Cereal Bar  
\*\*\*\*  
Amazing Chickpea  
Sandwich w/ Cheese Stick

8 Blueberry Muffin  
w/ Cheese stick  
\*\*\*\*  
Lunchables

9 Poptart  
\*\*\*\*  
Yogurt Bento

10 Cereal w/ Cheese Stick  
\*\*\*\*  
Deli Sandwich w/  
Chips

11 Yogurt Smoothie  
\*\*\*\*  
Lunchable

12 Benefit Bar  
\*\*\*\*  
Amazing Chickpea  
Sandwich w/ Cheese Stick

15 Choco Chip Muffin  
w/ Cheese Stick  
\*\*\*\*  
Lunchable

16 Concha w/  
Cheese Stick  
\*\*\*\*  
Yogurt Bento

17 Cereal w/ Cheese Stick  
\*\*\*\*  
Deli Sandwich w/  
Chips

18 Bagel w/ Cream Cheese  
\*\*\*\*  
Lunchable

19 Cereal Bar  
\*\*\*\*  
Amazing Chickpea  
Sandwich w/ Cheese Stick

22 Blueberry Muffin  
w/ Cheese stick  
\*\*\*\*  
Lunchables

23 Poptart w/ Cheese stick  
\*\*\*\*  
Yogurt Bento

24 Cereal w/ Cheese Stick  
\*\*\*\*  
Deli Sandwich w/  
Chips

25 Yogurt Smoothie  
\*\*\*\*  
Lunchable

26 Benefit Bar  
\*\*\*\*  
Amazing Chickpea  
Sandwich w/ Cheese Stick

Meals meet USDA Regulations and all items are whole grain-rich

Students must select 3 of 5 offered food components, at least one being a fruit or vegetable.

Meals meet USDA Regulations and all items are whole grain-rich.

Menu subject to change based on availability. This institution is an equal opportunity provider.